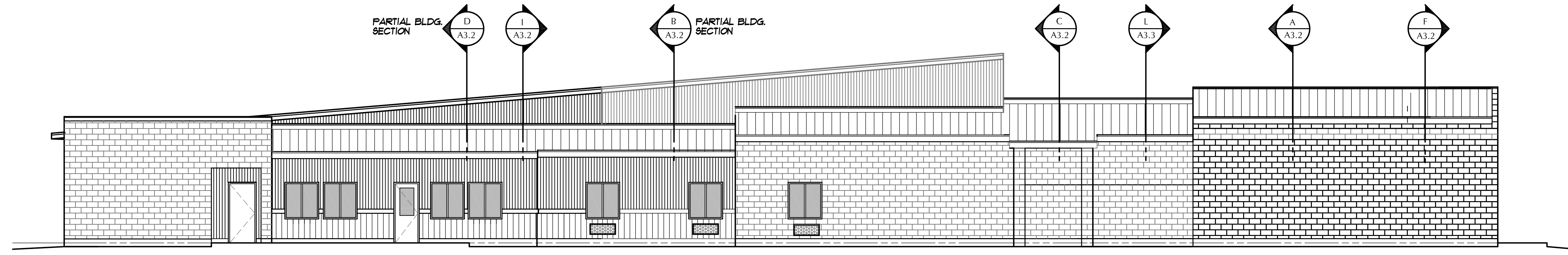


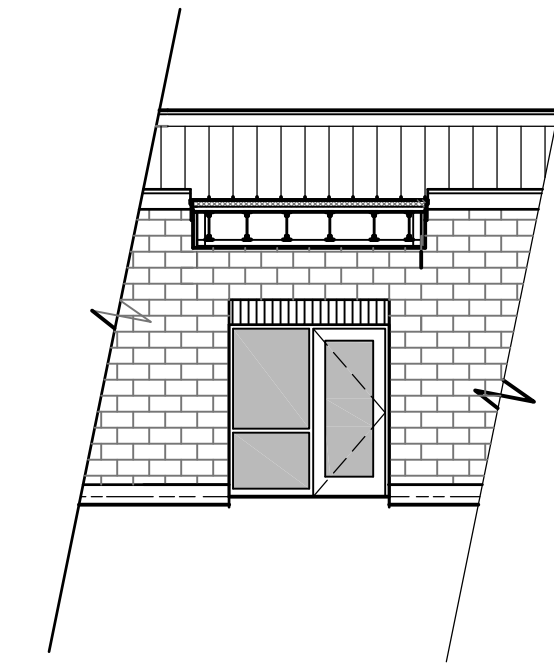
NORTH ELEVATION

1/8" = 1'-0"



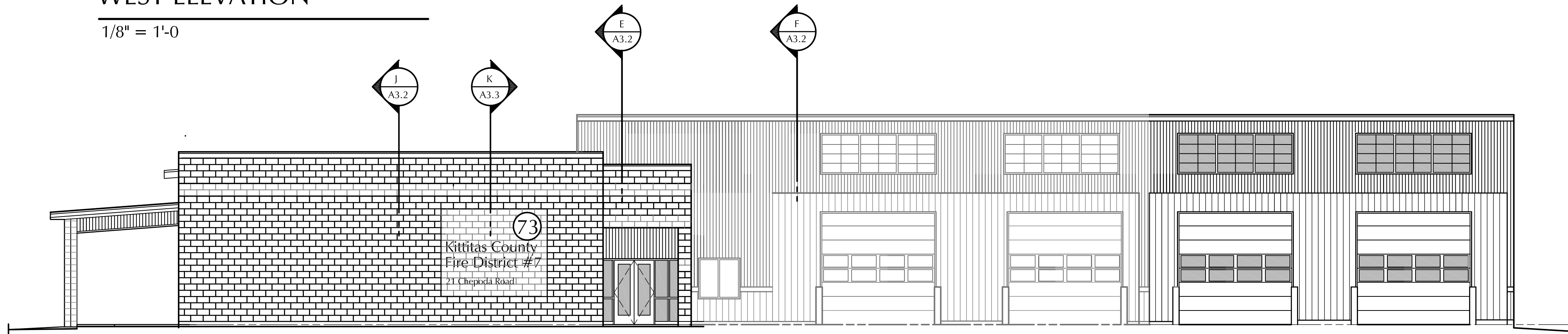
WEST ELEVATION

1/8" = 1'-0"



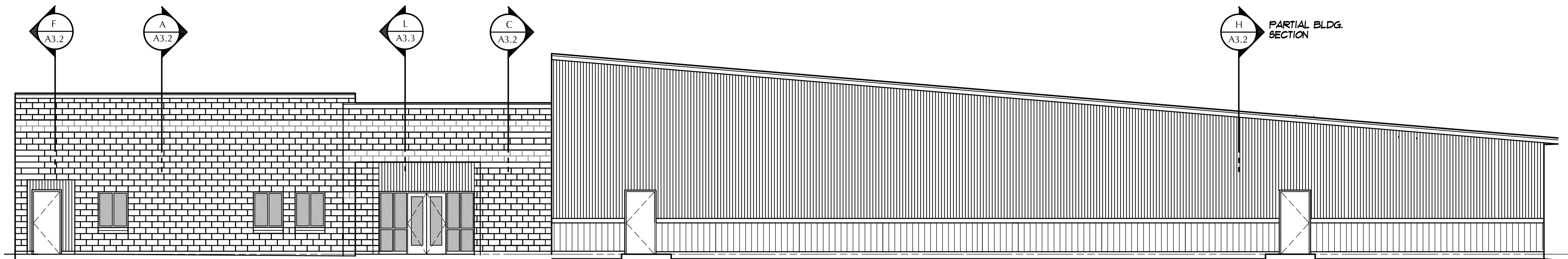
PARTIAL WEST ELEVATION AT ENTRY

1/8" = 1'-0"



SOUTH ELEVATION

1/8" = 1'-0"



EAST ELEVATION

1/8" = 1'-0"

N:\0805\Task 11\0805.2\11\Construction Documents\0805-A301.rvt.dwg, 3/13/2013 1:42:31 PM, The DOH Associates, PS